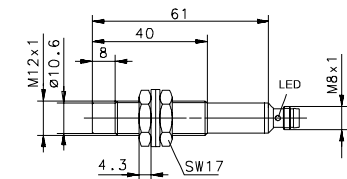
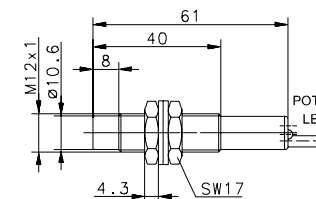
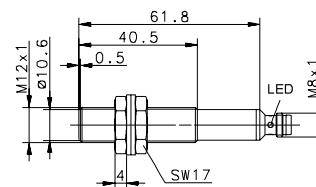
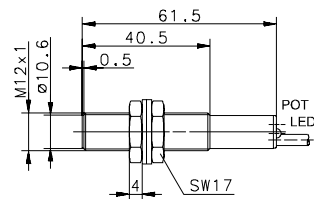


CAPACITIVE SENSORS Type M12



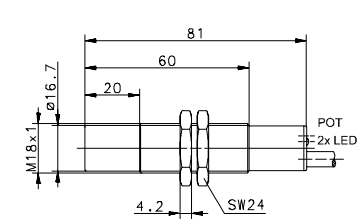
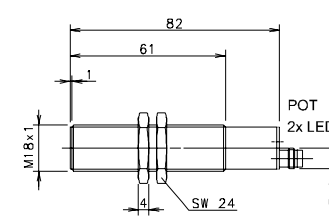
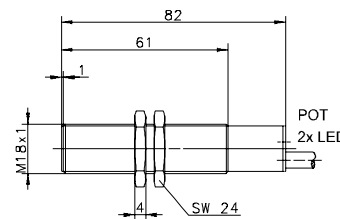
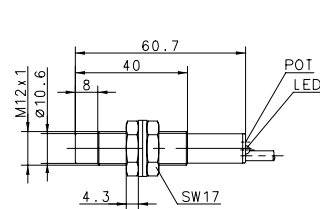
Type	M12	M12	M12	M12
Enclosure material	CuZn39Pb3	CuZn39Pb3	PBT, black	PBT, black
Type of installation	flush	flush	non-flush	non-flush
Nominal sensing distance	2 mm	2 mm	4 mm	4 mm
Type of connection	Cable 2 m	Connector M8	Cable 2 m	Connector M8
Special feature	PTFE Front cap	PTFE Front cap		
PNP	DC	NO contact	6507903001 KCB-M12PS/002-KLP2	6507903004 KCB-M12PS/002-KLSM8
PNP	DC	NC contact	6507703001 KCB-M12PÖ/002-KLP2	6507703004 KCB-M12PÖ/002-KLSM8
NPN	DC	NO contact	6507303001 KCB-M12NS/002-KLP2	6507319001 KCN-T12PS/004-KLP2
NPN	DC	NC contact	6507119004 KCN-T12NS/004-KLSM8	6507319004 KCN-T12NS/004-KLSM8
Technical data				
Rated operating voltage range	U_B	10–36 VDC	10–36 VDC	10–36 VDC
Rated operating current	I_e	≤ 200 mA	≤ 200 mA	≤ 200 mA
Switching frequency (max)	F	25 Hz	25 Hz	25 Hz
Short circuit-protection		cyclic	cyclic	cyclic
Function/operating voltage indicator		LED/–	LED/–	LED/–
Sensing distance, adjustable		Poti	–	Poti
Mechanical data				
Ambient temperature (min/max)		–25°C/+70°C	–25°C/+70°C	–25°C/+70°C
Protection class in accordance with IEC 529, EN 60529		IP65	IP65	IP65
Connection		3 x 0.14 mm ²	M8 x 1	3 x 0.14 mm ²



CAPACITIVE SENSORS Type M12, M18



Type	M12	M18	M18	M18		
Enclosure material	PBT, black	CuZn39Pb3	CuZn39Pb3	PBT, black		
Type of installation	non-flush	flush	flush	non-flush		
Nominal sensing distance	6 mm	5 mm	5 mm	8 mm		
Type of connection	Cable 2 m	Cable 2 m	Connector M8	Cable 2 m		
Special feature	Sensing distance	PTFE Front cap	PTFE Front cap			
PNP	DC	NO contact	6607919110 KCN-T12PS/006-KLP2E	6507905001 KCB-M18PS/005-KLP2	6507905004 KCB-M18PS/005-KLPSM8	6507921724 KCN-T18PS/008-KLP2
PNP	DC	NC contact				
PNP	DC	antivalent NO/NC				
NPN	DC	NO contact	6507305001 KCB-M18NS/005-KLP2	6507321723 KCN-T18NS/008-KLP2		
Technical data						
Rated operating voltage range	U_B	10–36 VDC	10–60 VDC	10–60 VDC	10–60 VDC	10–60 VDC
Rated operating current	I_e	≤ 200 mA	≤ 200 mA	≤ 200 mA	≤ 200 mA	≤ 200 mA
Switching frequency (max)	F	25 Hz	25 Hz	25 Hz	25 Hz	25 Hz
Short circuit-protection		cyclic	cyclic	cyclic	cyclic	cyclic
Function/operating voltage indicator		LED/–	LED/LED	LED/LED	LED/LED	LED/LED
Sensing distance, adjustable		Poti	Poti	Poti	Poti	Poti
Mechanical data						
Ambient temperature (min/max)		–25°C/+70°C	–25°C/+70°C	–25°C/+70°C	–25°C/+70°C	–25°C/+70°C
Protection class in accordance with IEC 529, EN 60529		IP65	IP65	IP65	IP65	IP65
Connection		3 x 0.14 mm ²	3 x 0.5 mm ²	M8 x 1	3 x 0.5 mm ²	3 x 0.5 mm ²



CAPACITIVE SENSORS Type M18



Type	M18	M18	M18	M18
Enclosure material	PA, red	PBT, black	PBT, black	PBT, black
Type of installation	non-flush	non-flush	non-flush	non-flush
Nominal sensing distance	8 mm	8 mm	13,5 mm	13,5 mm
Type of connection	Cable 2 m	Connector M8	Cable 3 m	Connector M12
Special feature	Short type		Sensing distance	Sensing distance/Short type
PNP	DC	NO contact	6507921002 KCN-T18PS/008-KLPSM8	6607921461 KCN-T18PS/013-KLP3
PNP	DC	NC contact		6507921004 KCN-T18PS/013-KLPS12V
NPN	DC	NO contact	6507321002 KCN-T18NS/008-KLPSM8	
NPN	DC	NC contact		
PNP	DC	Changeover contact	6507821001 KCN-T18PU/008-KLP2V	
Technical data				
Rated operating voltage range	U_B	10–60 VDC	10–60 VDC	10–60 VDC
Rated operating current	I_e	≤ 200 mA	≤ 200 mA	≤ 200 mA
Switching frequency (max)	F	25 Hz	25 Hz	25 Hz
Short circuit-protection		cyclic	cyclic	cyclic
Function/operating voltage indicator		LED/LED	LED/LED	LED/LED
Sensing distance, adjustable		Poti	Poti	Poti
Mechanical data				
Ambient temperature (min/max)		–25°C/+70°C	–25°C/+70°C	–25°C/+70°C
Protection class in accordance with IEC 529, EN 60529		IP65	IP65	IP65
Connection		4 x 0.34 mm ²	M8 x 1	3 x 0.5 mm ²

